



## REGIONAL SPECIALISED METEOROLOGICAL CENTRE -TROPICAL CYCLONES, NEW DELHI TROPICAL WEATHER OUTLOOK

DEMS-RSMC TROPICAL CYCLONES NEW DELHI DATED 09.06.2025

**TROPICAL WEATHER OUTLOOK FOR THE NORTH INDIAN OCEAN (THE BAY OF BENGAL AND THE ARABIAN SEA) VALID FOR THE NEXT 168 HOURS ISSUED AT 0600 UTC OF 09.06.2025 BASED ON 0300 UTC OF 09.06.2025.**

### BAY OF BENGAL:

Yesterday's upper air cyclonic circulation over Southeast & adjoining eastcentral Bay of Bengal persisted and now seen between 5.8 & 7.6 km above mean sea level at 0300 UTC of today, the 09<sup>th</sup> June, 2025 .

A fresh upper air cyclonic circulation formed over northwest Bay of Bengal and adjoining north coastal Odisha & south Gangetic West Bengal between 1.5 & 5.8 km above mean sea level at 0300 UTC of today, the 09<sup>th</sup> June, 2025.

Scattered to broken low and medium clouds with embedded moderate to intense convection lay over Bay of Bengal & Andaman Sea.

### \*PROBABILITY OF CYCLOGENESIS (FORMATION OF DEPRESSION) DURING NEXT 168 HRS:

24 HOURS	24-48 HOURS	48-72 HOURS	72-96 HOURS	96-120 HOURS	120-144 HOURS	144-168 HOURS
NIL	NIL	NIL	NIL	NIL	NIL	NIL

\*NOTE: EVERY 24HR FORECAST IS VALID UPTO 0300 UTC (0830 IST) OF NEXT DAY

### ARABIAN SEA:

Scattered low and medium clouds with embedded moderate to intense convection lay over eastcentral & southeast Arabian Sea off Maharashtra-Karnataka-Kerala coasts. Scattered low and medium clouds with embedded isolated weak to moderate convection lay over south Arabian Sea.

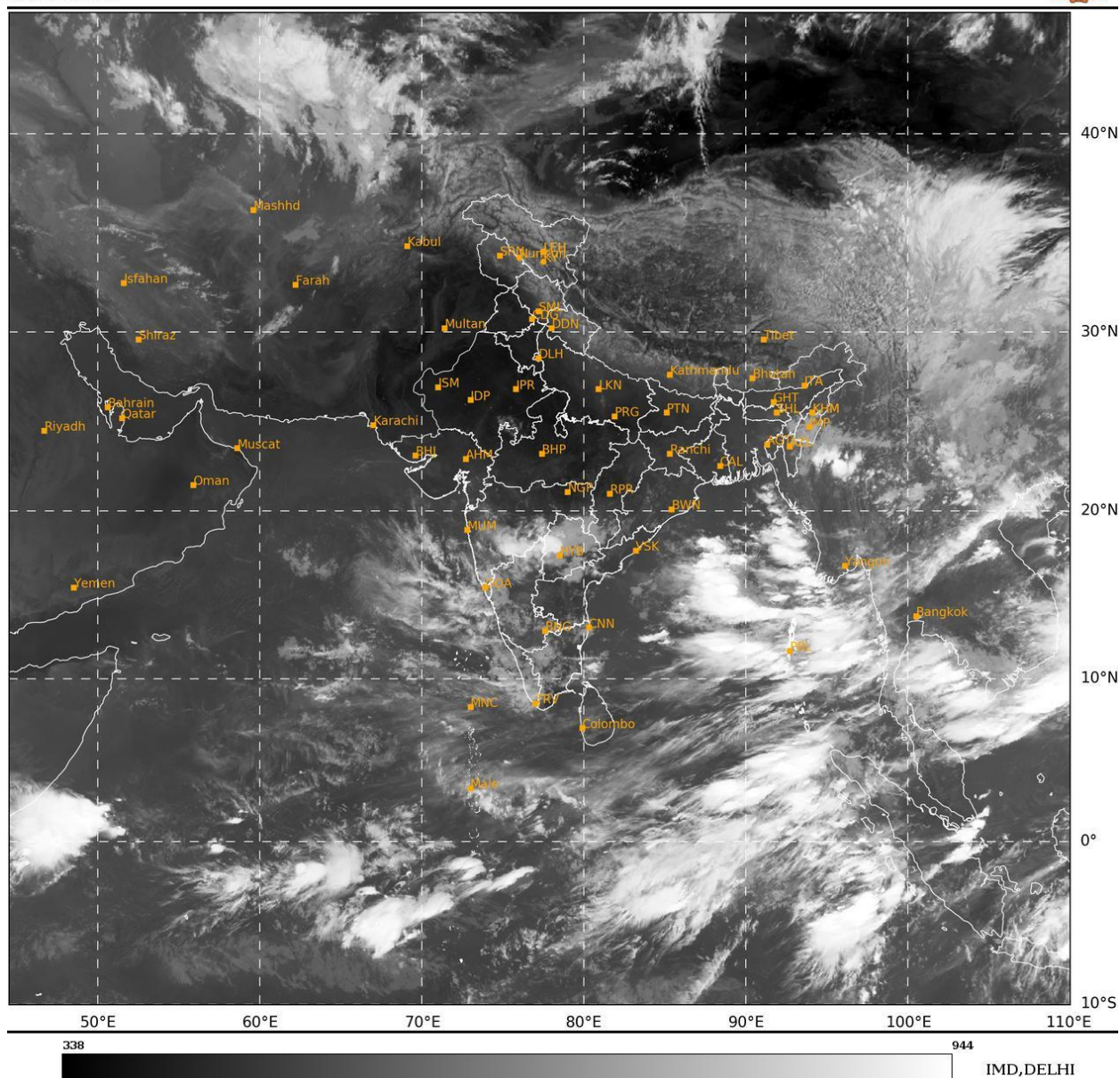
### \*PROBABILITY OF CYCLOGENESIS (FORMATION OF DEPRESSION) DURING NEXT 168 HRS:

24 HOURS	24-48 HOURS	48-72 HOURS	72-96 HOURS	96-120 HOURS	120-144 HOURS	144-168 HOURS
NIL	NIL	NIL	NIL	NIL	NIL	NIL

\*NOTE: EVERY 24HR FORECAST IS VALID UPTO 0300 UTC (0830 IST) OF NEXT DAY

**REMARKS:** NIL

09-06-2025/(0315 to 0342) GMT  
09-06-2025/(0845 to 0912) IST



Cloud distribution: (a) Isolated: <25%, Scattered:25-50%, Broken: 51-75%, Solid:>75%, Convection Intensity: (a) Weak: Cloud Top Temperature(CTT)>-25°C,(b)Moderate:CTT:-25°Cto-40°C,(c)Intense:CTT: -41°Cto -70°Cand(d)Very Intense::Less than -70°C  
PROBABILITYOFCYCLOGENESIS(FORMATIONOFDEPRESSION):NIL:0%,LOW:1-33%,MODERATE:34-66%ANDHIGH:67-100%  
ThisisaguidanceBulletinforWMO/ESCAPPanelMembercountries.VisitrespectiveNationalwebsitesforCountryspecificBulletins